



IMPERIAL & WHITEHALL

23 Colmore Row, Birmingham B3 2BP

IMPERIAL & WHITEHALL

FORMS PART OF THE GRAND,
ONE OF BIRMINGHAM'S
MOST ICONIC BUILDINGS.



Premium Offices To Let
Available Now

VIEW A VIRTUAL TOUR
OF THE OFFICES ON
OUR WEBSITE

www.imperialandwhitehall.co.uk
www.thegrandbirmingham.co.uk

DESCRIPTION

Imperial & Whitehall forms the office element of the historic and impressive The Grand, Birmingham.

Located on the first and second floors, the accommodation is accessed via a reception entrance off Colmore Row and provides exceptionally modern, newly refurbished office suites.

SPECIFICATION

The specification includes:

- Cat 6 cabling
- Perimeter trunking
- Air conditioning
- Modern LG7 lighting
- Kitchen facilities
- Shower

ACCOMMODATION

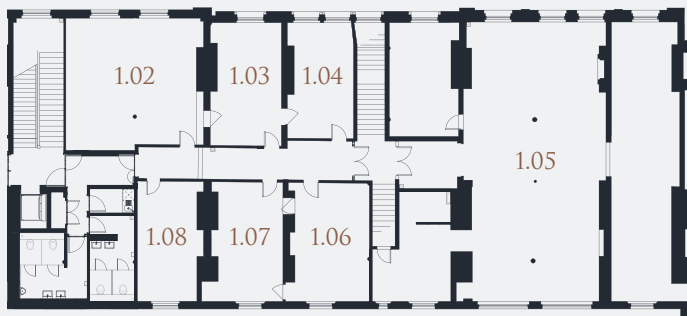
There is a range of suites available from circa 207 sq ft to 568 sq ft.

Larger areas of accommodation are available by combining suites.

SCHEDULE

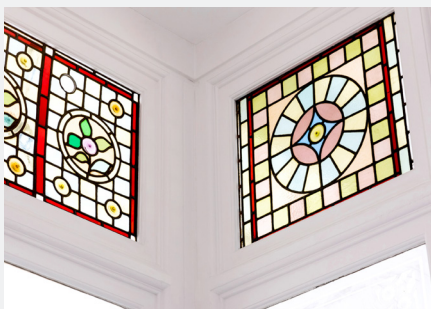
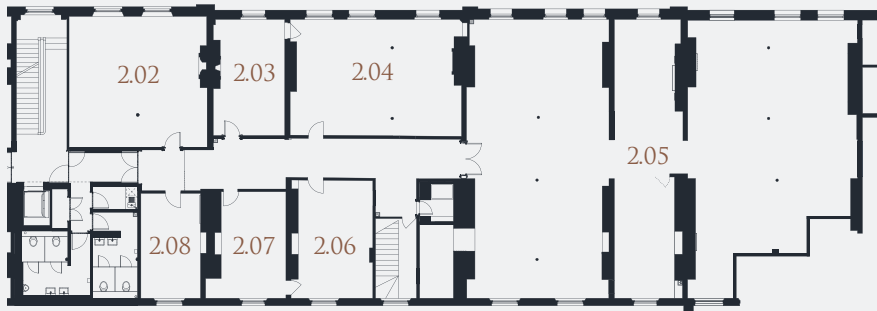
FIRST FLOOR

Suite	Sq m	Sq ft
1.02	48.18	519
1.03	23.47	253
1.04	20.73	223
1.05	207.01	2,228
1.06	25.54	275
1.07	23.08	248
1.08	19.88	214
TOTAL	472.20	5,083



SECOND FLOOR

Suite	Sq m	Sq ft
2.02	48.95	527
2.03	22.09	238
2.04	52.81	568
2.05	271.52	2,923
2.06	25.65	276
2.07	19.99	215
2.08	19.26	207
TOTAL	568.11	6,115



**fisher
german**

Charles Warrack

Charles.Warrack@fishergerman.co.uk
DDI: 0121 561 7885 M: 07977 512 965

Ellie Fletcher

Ellie.Fletcher@fishergerman.co.uk
07974 431 243

JLL®

Evie Davis

Evie.Davies@jll.com
T: 0121 643 6440 M: 07561 878 180

